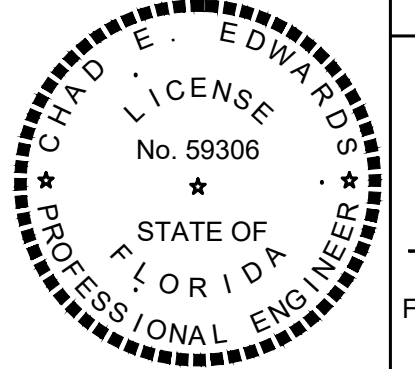
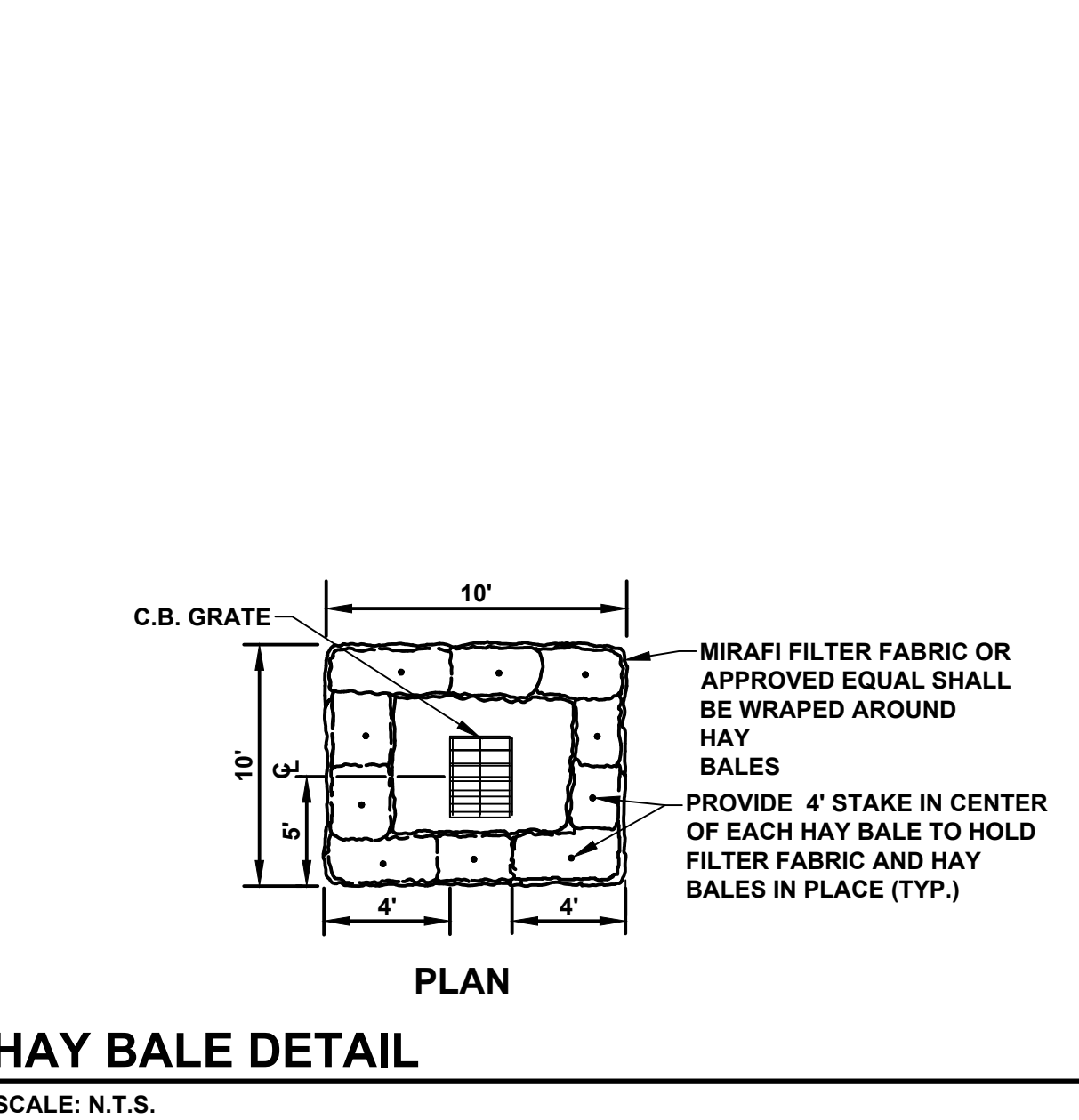
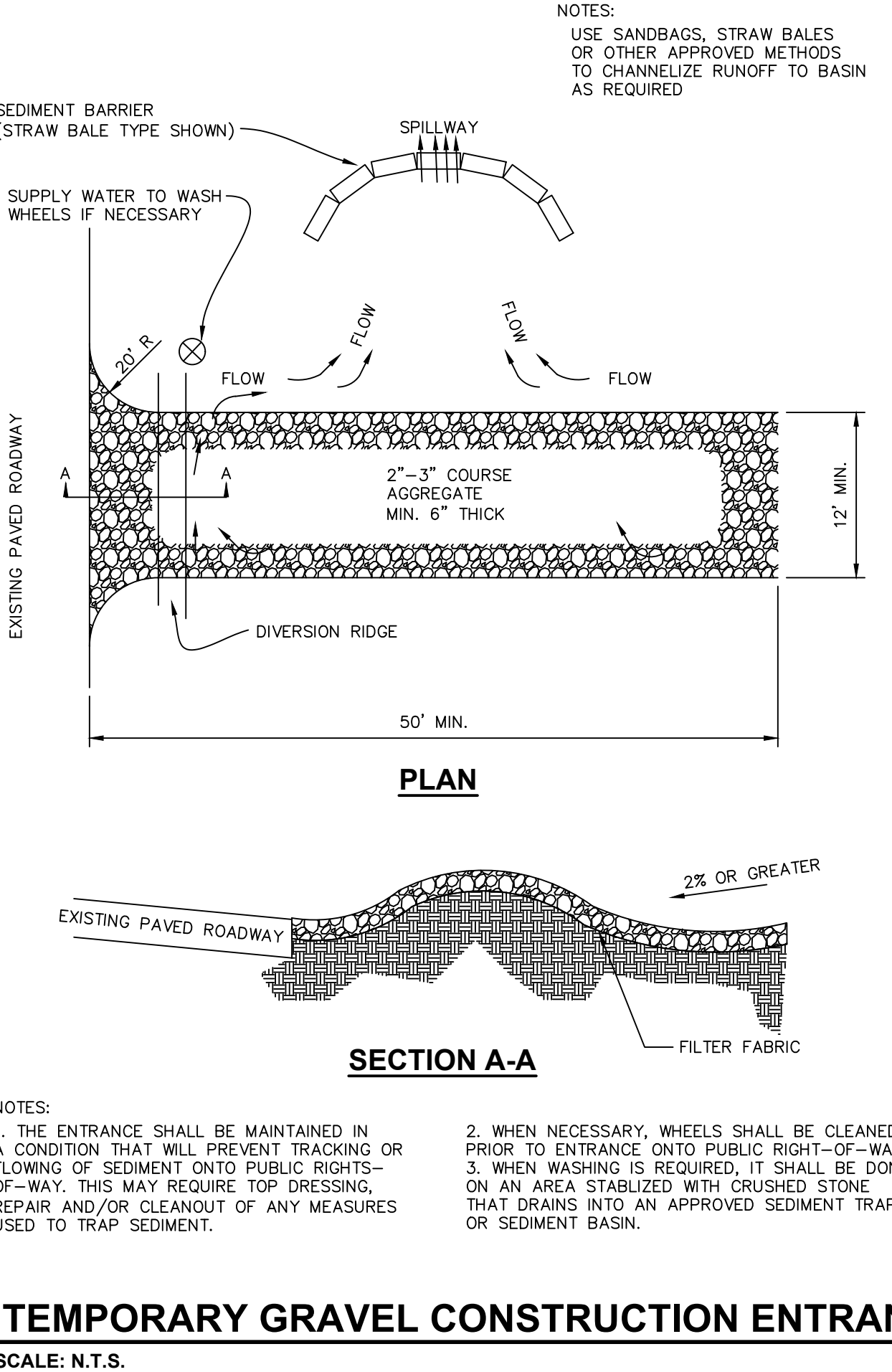
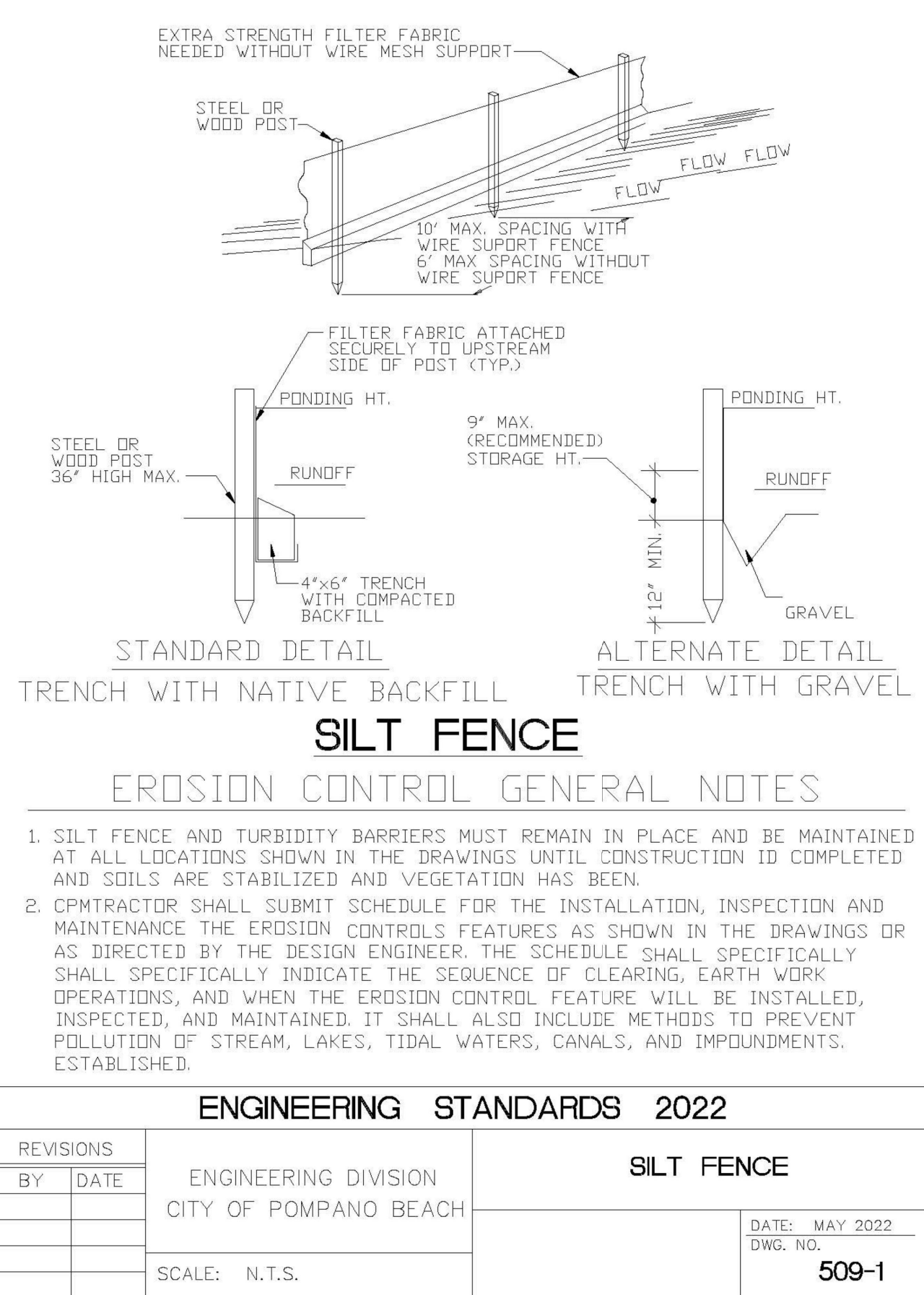
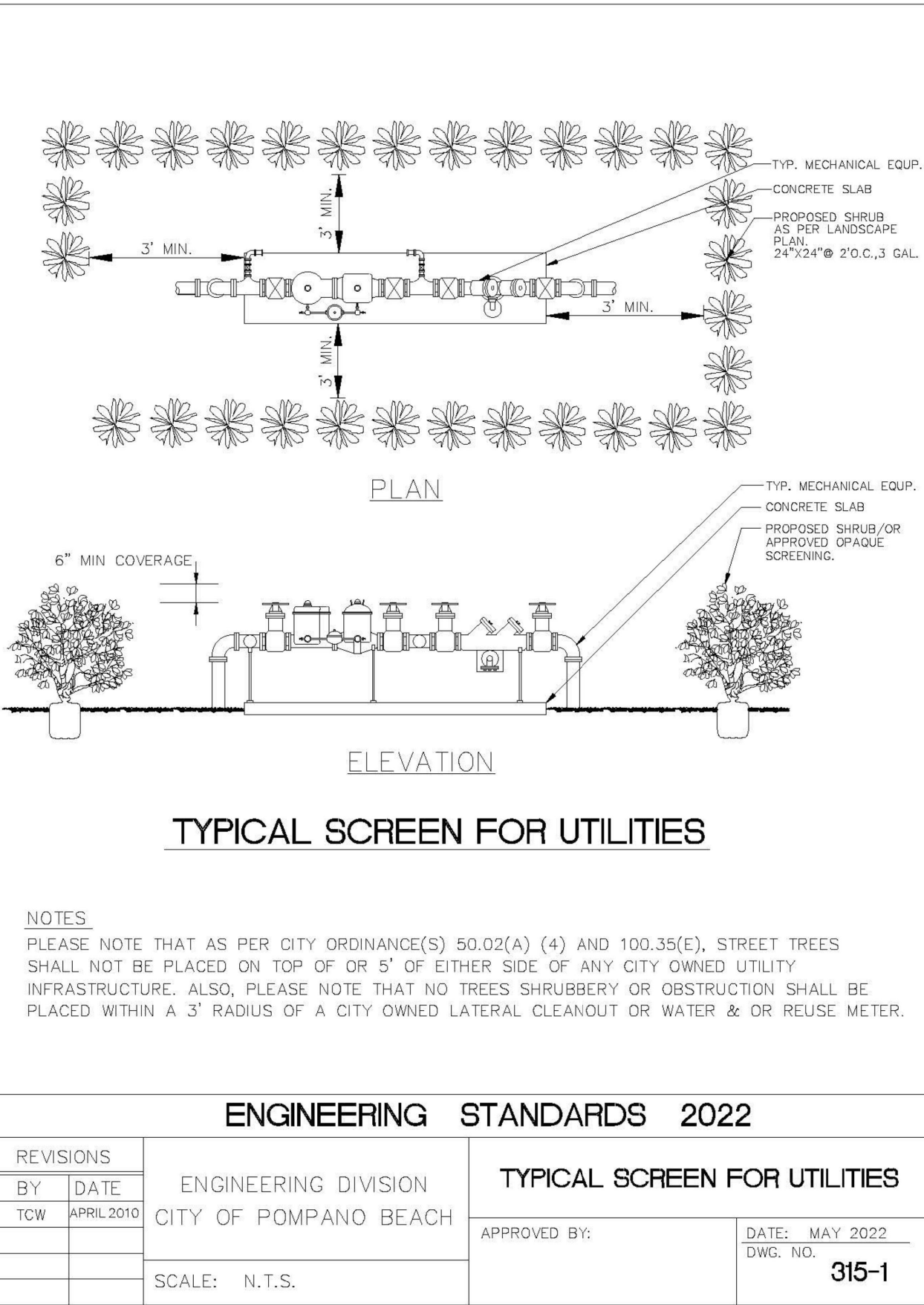
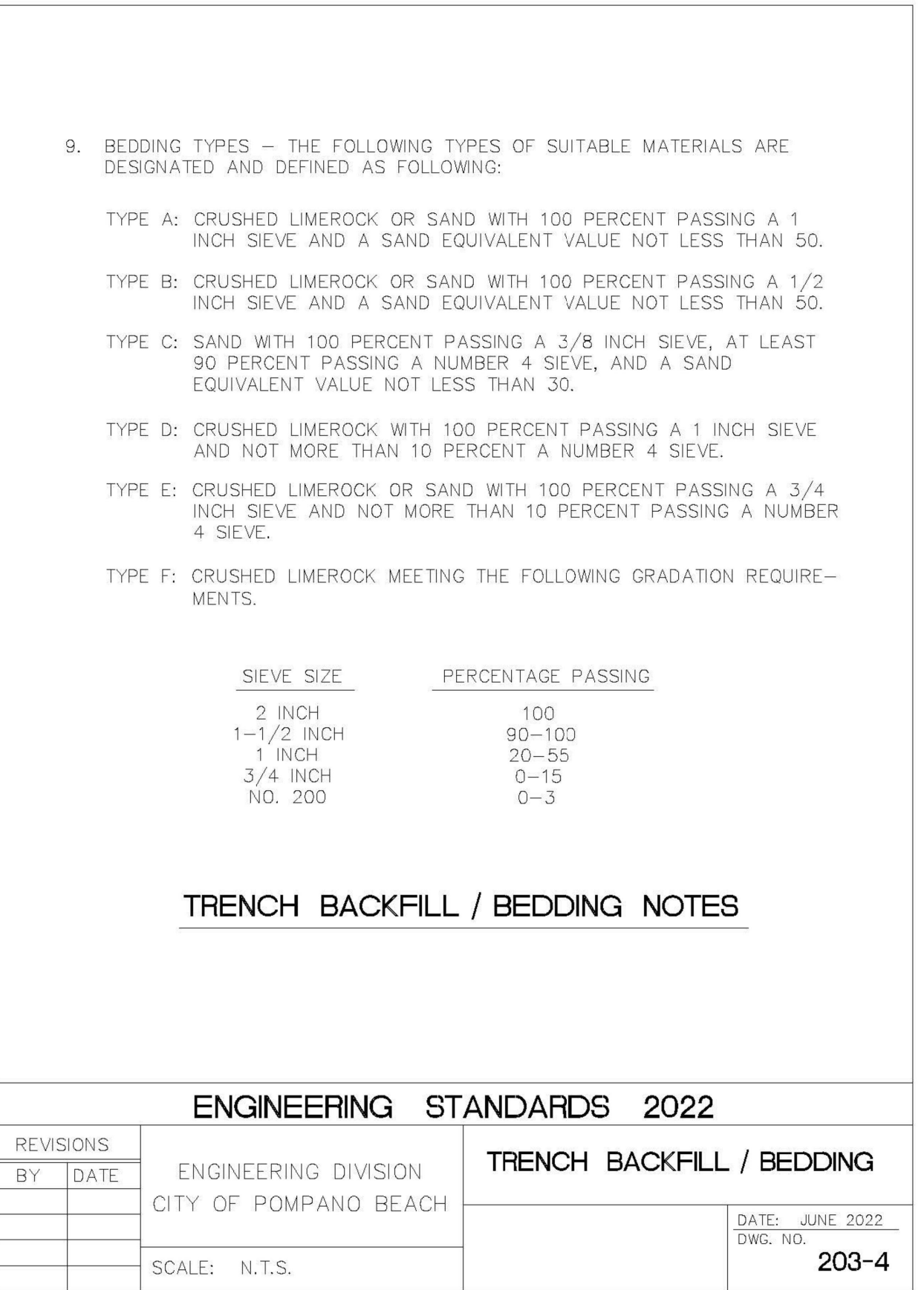
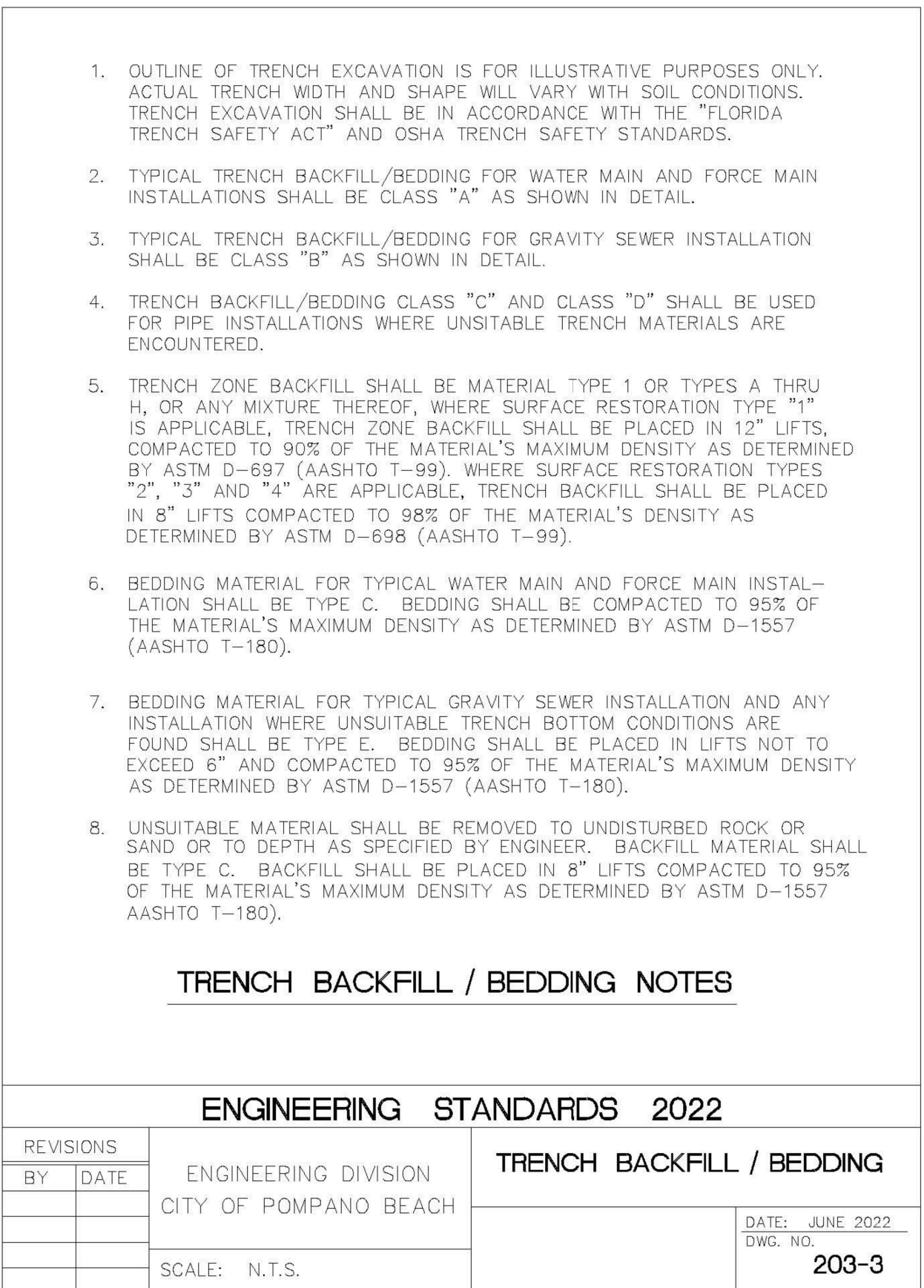
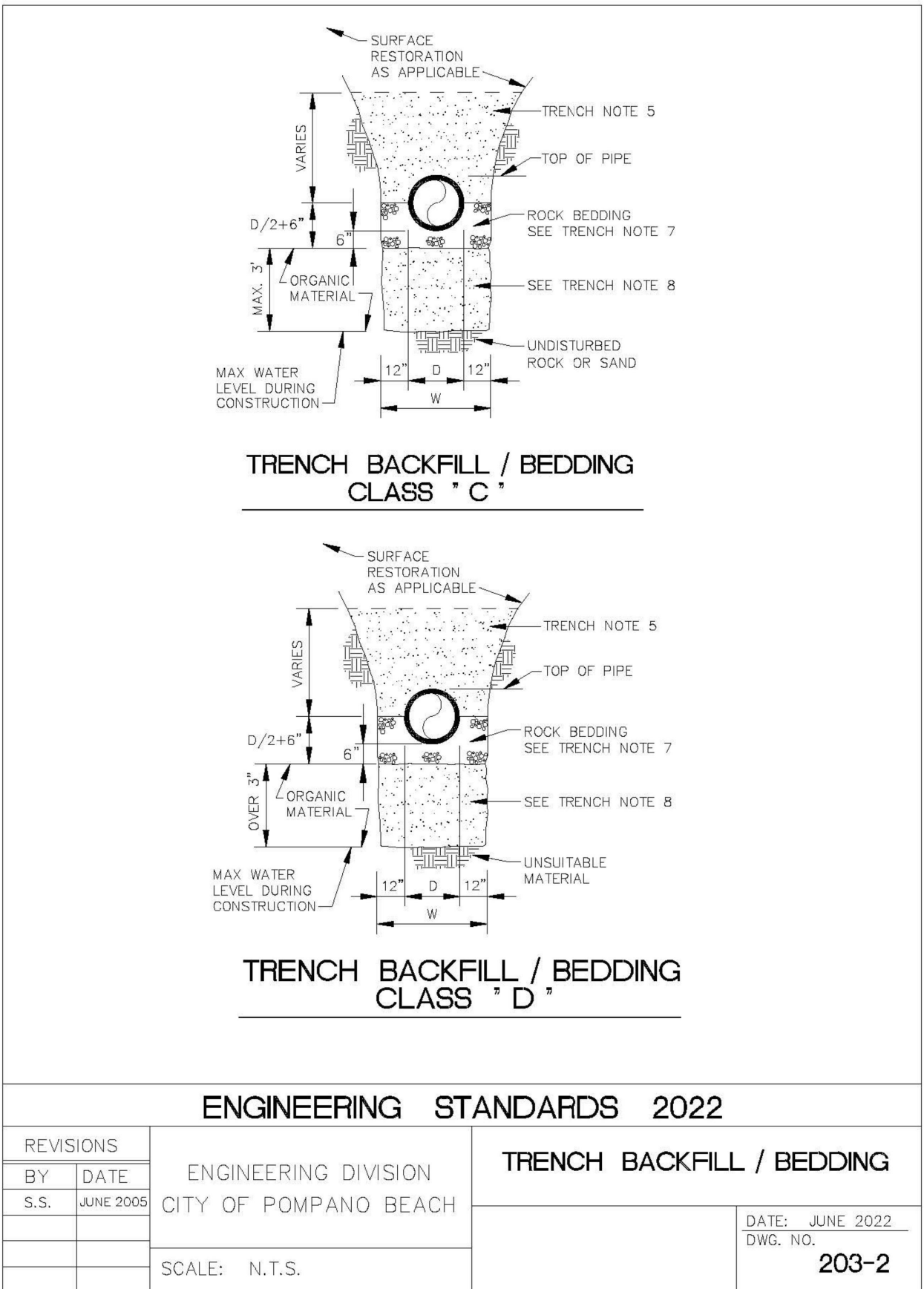
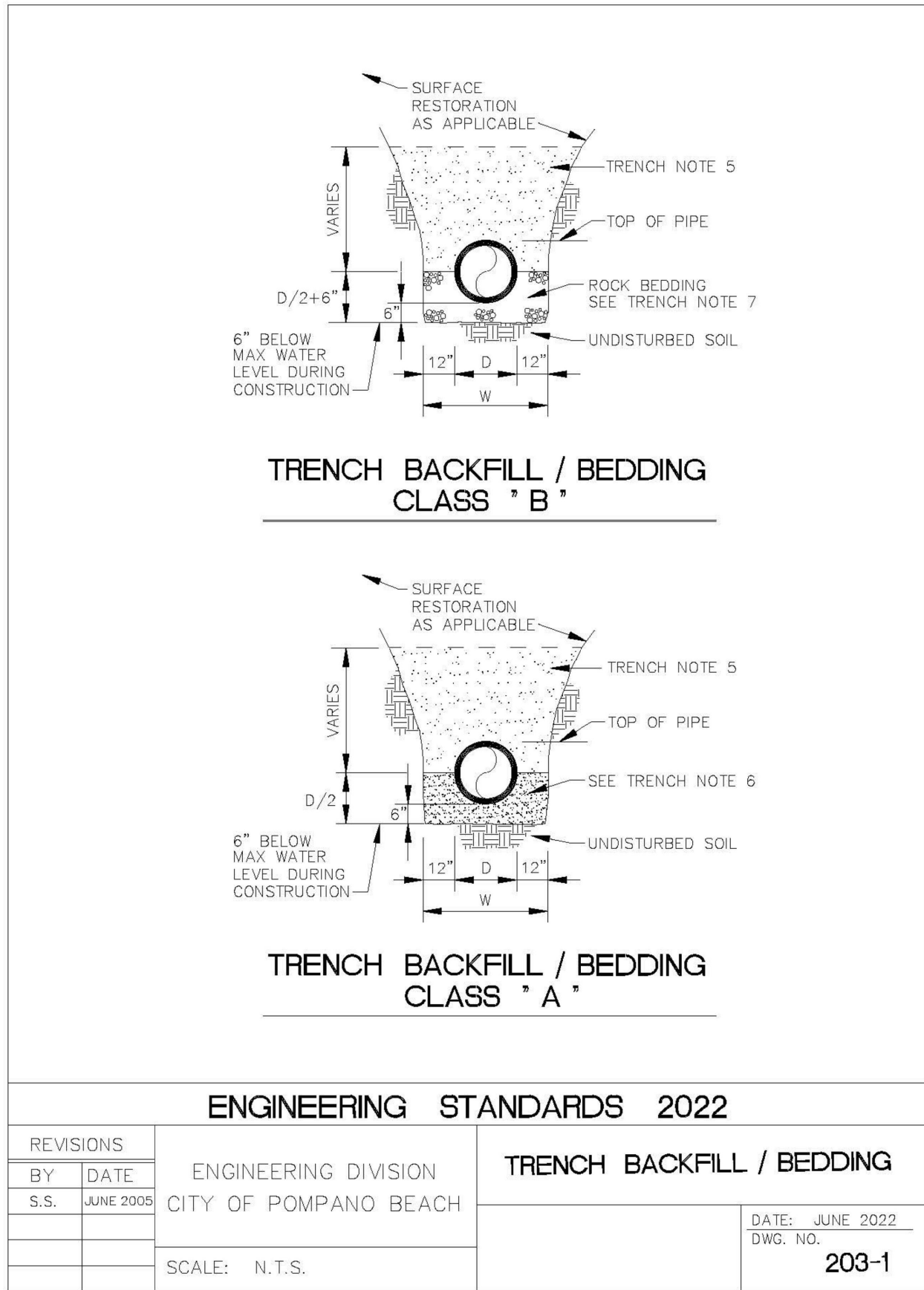


\\ctarline02\Eng\Projects\2024\24-0055 PGGD.dwg [C-6] Jul 02, 2025 1:21pm TRUBINO



CRAVEN • THOMPSON AND ASSOCIATES, INC.
ENGINEERS • PLANNERS • SURVEYORS
35653 N.W. 53RD STREET, FORT LAUDERDALE, FLORIDA 33309
FAX: (954) 739-6409 TEL: (954) 739-6400
FLORIDA LICENSED ENGINEERS, SURVEYORS & PLANNERS BUSINESS NO. 271
FLORIDA LICENSED LANDSCAPE ARCHITECTURE BUSINESS NO. C00014
MATERIAL SHOWN HEREIN IS THE PROPERTY OF CRAVEN, THOMPSON & ASSOCIATES, INC. AND SHALL NOT BE REPRODUCED OR IN PART WITHOUT WRITTEN PERMISSION OF CRAVEN-THOMPSON & ASSOCIATES, INC. COPYRIGHT © 2015

1501 WEST ATLANTIC BLVD.
POMPAÑO BEACH, FLORIDA
PREPARED FOR:
KAJA PROPERTIES INC.
DETAILS

CHAD E. EDWARDS, P.E.
FLORIDA LICENSE No. 59306
2025-07-02
PROJECT NO.
24-0055-001-01
C-6
SHEET 6 OF 14

AAC

PZ24 12888026

08.20.2025

This document has been digitally signed and sealed by Chad Everett Edwards, P.E. on the date indicated here. Printed copies of this document are not considered signed and sealed and the signature must be verified on any electronic copies.